



GMT MONTHLY MEMBERSHIP PROGRESS REPORT

Results as of: 6/30/2018

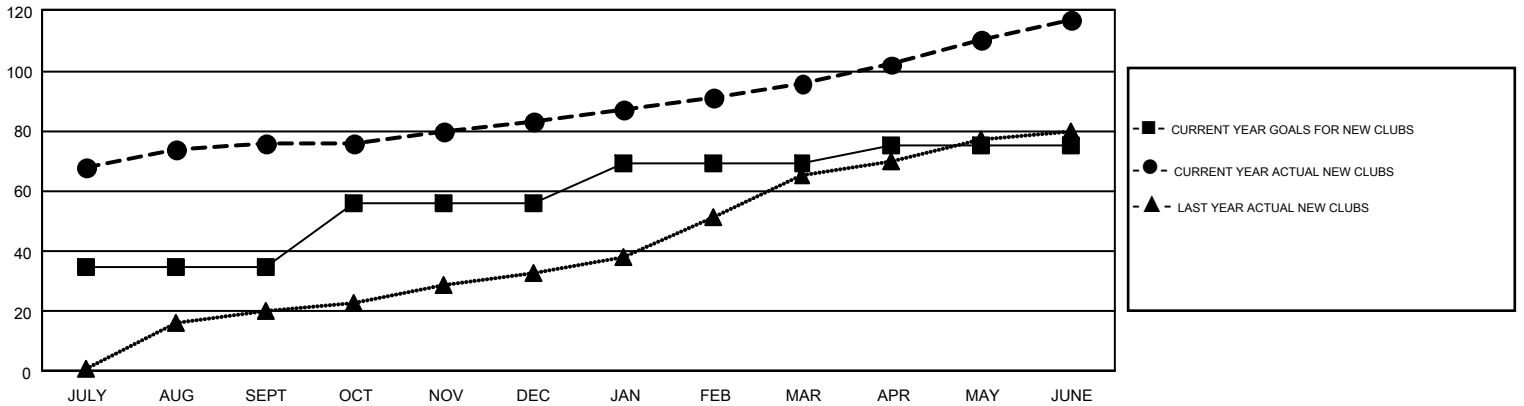
GMT Constitutional Area 6, Group C

GMT: VENKATA S RAJU DANTULURI

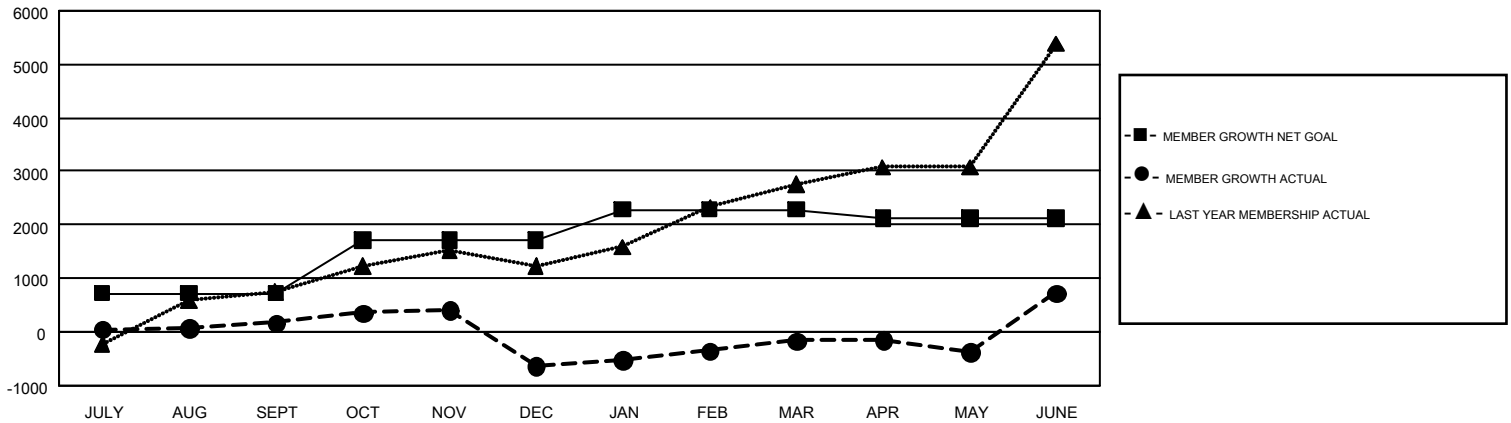
REPORT DOES NOT INCLUDE CLUBS IN UNDISTRICTED AREAS.

| Clubs | | | | Members | | | |
|-----------------------|---------------|-----------|---------------|-----------------------|------------------------|----------------------|--|
| RESULTS FOR 2017-2018 | | | | RESULTS FOR 2017-2018 | | | |
| QUARTER | NEW CLUB GOAL | NEW CLUBS | DROPPED CLUBS | QUARTER | MEMBER GROWTH NET GOAL | MEMBER GROWTH ACTUAL | DROPPED MEMBERS ACTUAL (including transfers) |
| JULY/AUG/SEPT | 35 | 76 | 5 | JULY/AUG/SEPT | 715 | 2,406 | 2,044 |
| OCT/NOV/DEC | 21 | 7 | 29 | OCT/NOV/DEC | 1,005 | 779 | 1,521 |
| JAN/FEB/MAR | 13 | 13 | 4 | JAN/FEB/MAR | 569 | 1,169 | 542 |
| APR/MAY/JUNE | 6 | 21 | 29 | APR/MAY/JUNE | -161 | 4,685 | 3,693 |

GOALS AND ACTUAL NEW CLUBS CUMULATIVE



GOALS AND ACTUAL MEMBERS CUMULATIVE



| | | |
|---|---|---|
| DROPPED CLUBS: 67 | 662 CLUBS OF 923 ADDED 1 OR MORE NEW MEMBERS | GENDER DISTRIBUTION MALE 26,528 (78.59%) FEMALE 7,228 (21.41%) |
| DROPPED MEMBERS DECEASED 111 CLUB CANCELLED 1,611 OTHER 6,077 TOTAL 7,799 | CLICK HERE FOR CUMULATIVE MEMBERSHIP DATA | TOTAL FAMILY UNIT MEMBERS 0 FAMILY MEMBERS PAYING HALF DUES 0 |